

# PINNACLE SL300

BRINGING YOU PEACE OF MIND



## DIFFERENT BY DESIGN

The Pinnacle stair lift has an established reputation as an industry leader for its innovative design, solid performance and reliability. Its patented drive system serves as a cornerstone that makes this stair lift different from all others on the market.

- Clean Operation – Pinnacle technology means no grease or lubrication. Cleaner for you, your home, or even pets.
- Efficient motor with nylon polymer gear/worm drive provides as many as 40 up and down cycles on batteries during a power outage.
- Symmetrical design provides industry's most compact folded width. The rail mounts 1" from the wall and is 3" tall helping to stay out of sight.

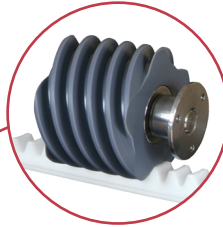
## CLEAR WALKWAYS

Harmar's exclusive automatic and mechanical folding rail (optional) removes obstructions and trip hazards at the lower landing area. Its operation is automatic, the user does not need to stop or have someone else assist. And since it's mechanical, there are no additional switches or controls.

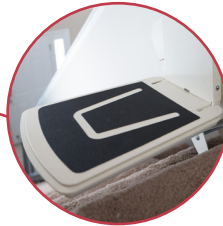
# DESIGNED WITH YOU IN MIND



Ergonomic control switch helps those with arthritis or limited hand dexterity.



Nylon-polymer gear with helical worm drive features 6-points of contact for a smooth ride.



Oversized footrest provides more comfort and security.



*My Pinnacle gives me the confidence to go up and down my stairs safely. It operates smoothly and is very quiet. I feel comfortable in my own home and less dependent upon others. My children have peace of mind knowing I am safer with my Pinnacle.*

## SL300 PRODUCT SPECIFICATIONS

<b>WEIGHT CAPACITY</b>	300 lb	<b>INCLINE LIMITS</b>	32° - 45°
<b>TRACK LENGTH</b>	15'6" - 36'	<b>SPEED</b>	20 FPM
<b>SEAT SIZE</b>	19"W x 16"D	<b>FOOTREST SIZE</b>	12.6" x 14.8"
<b>FOLDED WIDTH</b>	- 11" from wall - 13.6" with folding rail	<b>DRIVE</b>	- Patented nylon polymer - Helical worm gear
<b>ETL CERTIFIED</b>	- Yes - ASME A18.1 and ASME A17.5	<b>WARRANTY</b>	- 2-year parts - 10-year gear - 1-year battery
<b>SAFETY FEATURE(S)</b>	- Seat belt - Overspeed brake - Audible alert system - Swivel seat with interlock - Footrest obstruction sensor	<b>OPTION(S)</b>	- Retractable seat belt - Automatic folding rail - Chassis obstruction sensor - Key lock - Extra rail - Manual lowering tool